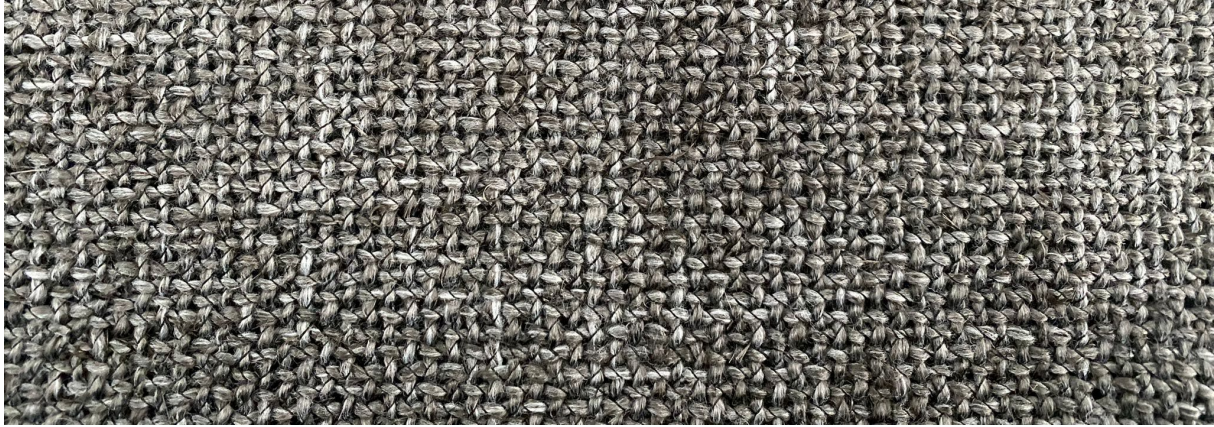


PRODUCT DATA SHEET

B25-001 REC-rCF/PA6-1200T-PL-550

Bidirectional Recycled Carbon Fiber fabric and thermoplastic polymer.



PROPERTIES

Property	Value
Fiber areal weight (FAW)	280 g/m ²
Weight per ply (PAW)	550g/m ²
Resin content by weight	50% PA6
Moisture pick up <i>(Kept in water 28 days at 23°C)</i>	-%
Consolidated ply thickness	0,25mm

FABRIC DESIGN

Property	Value
Fiber	rCF
Matrix	PA6
Pattern	Plain
Width <i>Contact us for special widths</i>	100cm
Density	2 picks/cm

MECHANICAL DATA

Property	Test method	Value	Unit
Tensile strenght	EN ISO 527	343	MPa
Tensile modulus	EN ISO 527	30,8	GPa
Flexural strenght	EN ISO 14125	310	MPa
Flexural modulus	EN ISO 14125	27	GPa
Compressive strenght	ASTM D3410	-	MPa
Interlaminar Shear Strength	ILSS	-	MPa

NEAT POLYMER PROPERTIES

Property	Value
Tg	60°C
Tm (melt)	220°C
Tp (processing)	250°C
Consolidation pressure	30 Tn

MAIN FEATURES:

- Flexible
- Easy to manipulate and cut
- Suitable for aesthetic applications
- Same properties in both directions (0°/90°)

The described values in this technical sheet are the estimated results obtained in the TEXFIRE TEXTILS TECNICS S.L internal laboratory according to standard methodologies. TEXFIRE reserves the right to change the parameters without the obligation to notice it previously.

